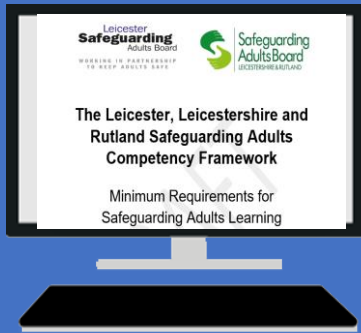


# Leicester, Leicestershire, and Rutland Safeguarding Adults Competency Framework



## Adult Social Care Festival of Practice: Assessing Competency, Using the Safeguarding Adults Competency Framework

**Venue:** Voluntary Action Leicester, Conference Room, 9 Newarke Street, Leicester LE1 5SN

**Facilitated by:** EQV Learning and supported by members of the LLR Safeguarding Adults Boards' Safeguarding Adults Competency Framework group.

### **Date and sessions:**

- Wednesday 18 September 9.30am – 12.30pm (sign-in from 9.15am)
- Wednesday 18 September 1.30pm – 4.30pm (sign-in from 1.15pm)

### **This session is open to:**

- Adult Social Care professionals across Leicester, Leicestershire and Rutland
- Care providers- i.e. staff from care homes, nursing homes, domiciliary care and independent living.
- Local authority staff who have contact with adults – i.e. Housing, Libraries, Leisure Services, Adult Learning.
- Voluntary sector organisations
- SAB partner organisations

### **During the session, you will:**

- Learn about the new Leicester, Leicestershire and Rutland Safeguarding Adults Competency Framework
- Learn about assessing competency in creative and meaningful ways
- Participate in workshops, using practical case studies, to apply the competency framework in your organisation/sector.

To book your place, contact the Leicester Safeguarding Adults Board at [LSAB-events@leicester.gov.uk](mailto:LSAB-events@leicester.gov.uk) Spaces are limited so booking early is recommended.