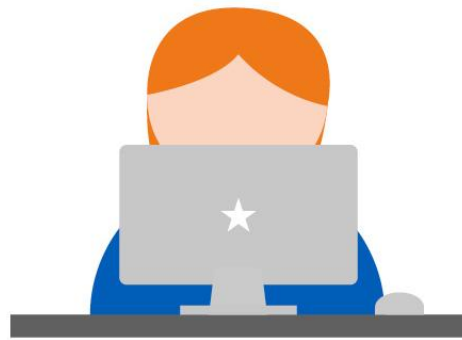


Adult Social Care Workforce Data Set (ASC-WDS)

Nat Riley, Locality Manager – Midlands Team

The Adult Social Care Workforce Data Set

ASC-WDS is a free data collection service, commissioned and funded by the Department of Health and Social Care. It is the leading source of intelligence for the adult social care workforce. It helps you to **manage your team** and provides **crucial information to decision makers**.



The Adult Social Care Workforce Data Set



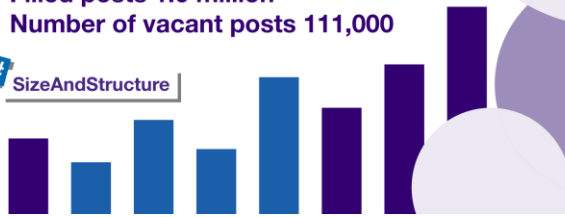
Total number of posts in adult social care in England was

1.71 million as at 2024/25.

This is made up of:

- Filled posts 1.6 million
- Number of vacant posts 111,000

#SizeAndStructure



workforce
intelligence

International recruitment has fallen in 2024/25

Our latest report shows that around 50,000 people joined the sector from outside of the UK into direct care providing roles.

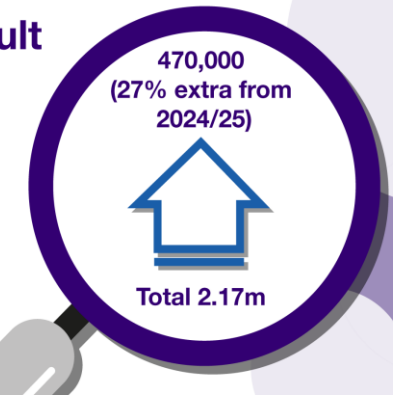
#SizeAndStructure

workforce
intelligence



Number of posts in adult social care required by 2040

#SizeAndStructure



workforce
intelligence

Our crucial intelligence is used by:



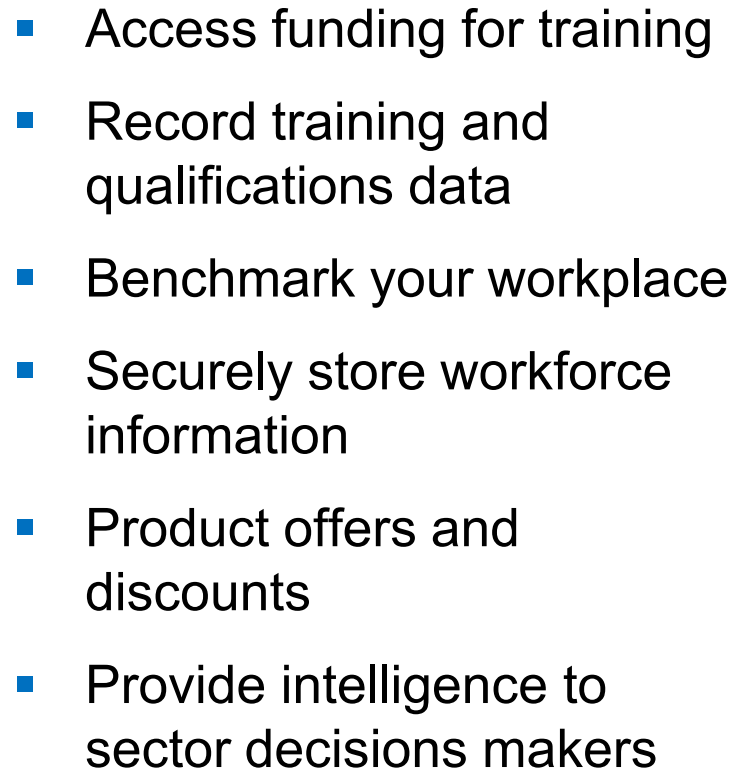
Who we are regulated by:



Office for
Statistics Regulation

Let's talk about the direct provider benefits

Top 3 reasons providers create an ASC-WDS account:

- 
- A graphic of a computer window with a blue header bar and three white dots on the left. The main area is white and contains a list of six bullet points.
- Access funding for training
 - Record training and qualifications data
 - Benchmark your workplace
 - Securely store workforce information
 - Product offers and discounts
 - Provide intelligence to sector decisions makers

1 Access to funding for staff training.

2 Manage staff training and qualifications.

3 Provide insight to CQC and DHSC to support sector changes.

Provider Story

Creative Support – NFP Care Provider

- Over the past three funding for training years, they've claimed back £330,000 which they've reinvested into their own learning and development department as well as wage replacement costs which has had a positive impact on staff morale.
- They've also used the Benefits Bundle discounts for eLearning modules and saved over £8,300 on licence costs using the codes.

Join over 21,000 care providers already using ASC-WDS

Claiming funding for training



[The Learning and Development Support Scheme](#)

- Eligible ASC qualifications and courses
- Started in September 2024 and runs until by 31 March 2026
- Claims from NHSBSA
- Must have an updated ASC-WDS account to claim the funding
- Easy to check your data meets requirements using the checker tool inside ASC-WDS
- [Adult Social Care Workforce Data Set requirements](#)

Claiming the Adult Social Care Learning and Development Support Scheme

1. Make sure your ASC-WDS account [meets requirements](#) by 31 March 2026. (You'll be asked if you have an account in the next step).
2. Complete [online form](#) to express your interest.
3. Employers will be contacted by NHSBSA to start the onboarding process in due course.
4. Gather [required evidence](#).
5. For training courses, submit your claim by 21 March 2026.
6. For qualifications, employers must claim 60% of the cost by the earliest date of either 21 March 2026 or within 3 months of when an employee starts the qualification. The remaining 40% must be claimed within 3 months of qualification completion.

(Note that the overall funding pot is limited. Once this has been exhausted, claims submitted will not receive reimbursement, so don't leave it until the latest deadlines.)

Benchmarking

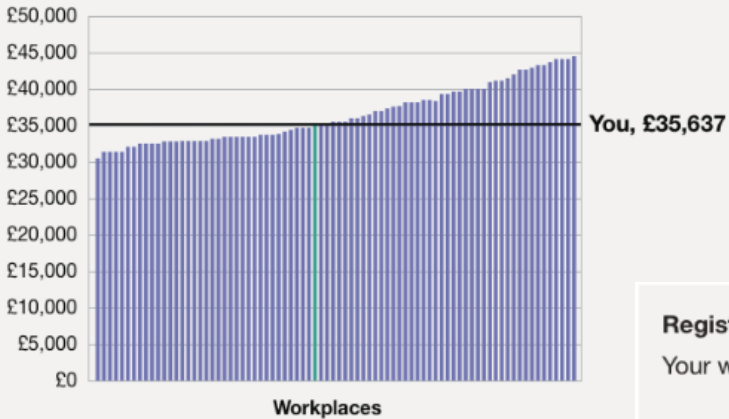
Average pay and salaries

	Your workplace	Comparison group
Care worker pay	£10.26 (hourly)	£9.75 (hourly)
Senior care worker pay	£11.05 (hourly)	£11.50 (hourly)
Registered nurse salary	£34,130 (annually)	£34,100 (annually)
Registered manager salary	£35,637 (annually)	£36,185 (annually)

Registered manager salary

Your workplace pays more than **31** others in a comparison group of **72** workplaces.

Annual salary



Registered manager salary

Your workplace ranks **41** in a comparison group of **72** workplaces.



Workforce planning

- Understand your current workforce
- Identify current or potential skills gaps
- Your local labour market and future demand



Your data makes an impact

- Data is kept anonymous
- Provides robust intelligence and evidence to DHSC, local authorities, CQC and others to help them plan, fund and monitor the sector.
- Used to create key publications



What you need to create an account

All you need to set up the account is:

- Your name and job title.
- CQC details if you're registered.
- Main service details.
- How many staff members you have.

Once you've set up the account you can start adding your workforce data!

If you have any questions, call our Support Team on 0113 241 0969 or email ascwds-support@skillsforcare.org.uk

We have a service helpline that can support you every step of the way



Get started today!



Find out more and create your account at
www.skillsforcare.org.uk/ASCWDS

Or contact our support team for more information
T. 0113 241 0969
E. ascwds-support@skillsforcare.org.uk.

